



Professor Arthur Sale PhD FACS FIEAust PCP CPEng, 127 Tranniere Road Howrah Tas 7018; Phone 03-62471331; Mobile 0419-471331

# Repositories in Australia

*Arthur Sale*

[Arthur.Sale@utas.edu.au](mailto:Arthur.Sale@utas.edu.au)

Professor of Computer Science  
University of Tasmania

Presentation available at  
<http://eprints.utas.edu.au/1031>

# Australia in brief

About the area and dimensions of the USA

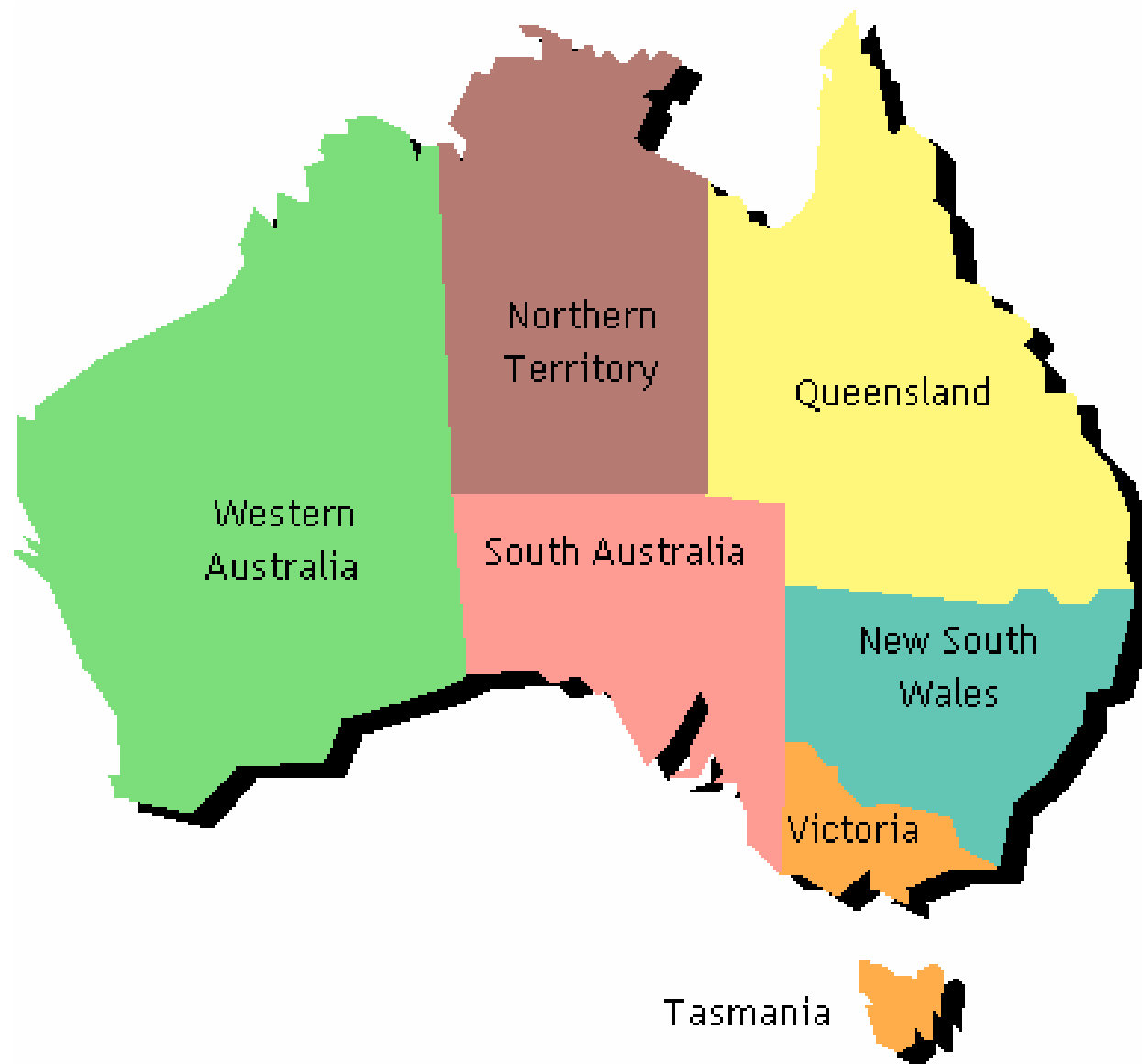
Federal governance with six States and two Territories

Population 20.8 M

Highly citified; cities mostly on the coast;  
big distances between major cities (one per State)

Produces ~3% of world's research





# Higher Education Sector

**38** universities ranging from research intensive to regional (+4 small colleges)

Large fraction of funding from Federal Government through **DEST** (*Department of Education, Science & Training*)

Other income from fees (including international students), research grants, consultancies, and endowments. Two private universities.

# Research funding

Two Research Councils fund projects and fellowships: **ARC** (*Australian Research Council*) and **NH&MRC** (*National Health & Medical Research Council*).

About to undertake **RQF** (*Research Quality Framework*) in 2008, which will affect block research funding for each university from 2009. RQF (Aus)  $\approx$  RAE (UK).

Both the Research Councils and the RQF will be discussed later.

# Early Repository Activity

Digital repository activity commenced in Australia around 2003/2004.

Early adopters were the Australian National University, University of Melbourne, University of Queensland, and University of Tasmania, all with EPrints software, and all research-intensive, top quartile.

University of New South Wales undertook a major digital theses repository project.

# “Backing Australia’s Ability”

Federal Minister and DEST decided to fund  
\$A 35M substantial digital repository-  
related projects, some of which are:

ADT, ARROW, APSR,  
RUBRIC, OAK-Law, MAMS

This talk will flesh some of these and give  
links for further information

# Australian Digital Theses

**ADT** is the oldest of the initiatives and provides a searchable gateway for electronic copies of **graduate research theses** (eg PhD) to digital repositories in 41 universities in Australia *and* New Zealand.

**Distributed model:** local repositories and local decision-making; centralized gateway and coordinated standards and support.







# Australasian Digital Theses Program

[Home/Search](#)

[About ADT](#)

[Standards](#)

[Member Information](#)

[News & Projects](#)

[Archive](#)

[Other L](#)

## Home/Search

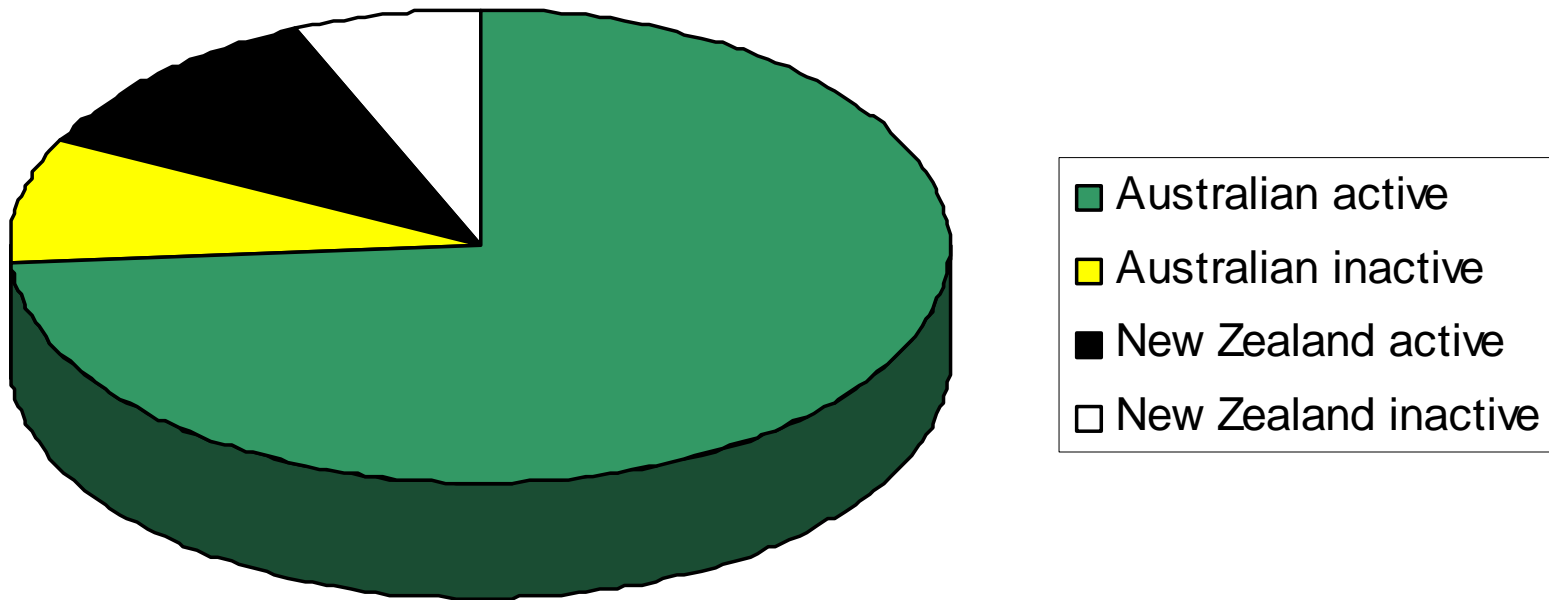
- > [Home/Search](#)
- > [Advanced Search](#)
- > [Latest Search](#)
- > [Browse](#)
- > [Search Tips](#)
- > [Feedback](#)
- > [View Cart \(0 items\)](#)
- > [Login](#)
- > [Logout](#)
- > [Create Account](#)
- > [Change Password](#)
- > [Stored Queries](#)

## Member Institution Views

|  |   |  |   |
|--|---|--|---|
|  | <a href="#">Auckland University of Technology</a> |  | <a href="#">University of Auckland</a>          |
|  | <a href="#">Australian Catholic University</a>    |  | <a href="#">University of Ballarat</a>          |
|  | <a href="#">Australian National University</a>    |  | <a href="#">University of Canberra</a>          |
|  | <a href="#">Bond University</a>                   |  | <a href="#">University of Canterbury</a>        |
|  | <a href="#">Central Queensland University</a>     |  | <a href="#">University of Melbourne</a>         |
|  | <a href="#">Curtin Uni. of Technology</a>         |  | <a href="#">University of New South Wales</a>   |
|  | <a href="#">Deakin University</a>                 |  | <a href="#">UNSW at ADFA</a>                    |
|  | <a href="#">Edith Cowan University</a>            |  | <a href="#">University of Newcastle</a>         |
|  | <a href="#">Flinders University</a>               |  | <a href="#">University of Otago</a>             |
|  | <a href="#">Griffith University</a>               |  | <a href="#">University of Queensland</a>        |
|  | <a href="#">James Cook University</a>             |  | <a href="#">University of South Australia</a>   |
|  | <a href="#">La Trobe University</a>               |  | <a href="#">Uni. of Southern Queensland</a>     |
|  | <a href="#">Lincoln University</a>                |  | <a href="#">University of Sydney</a>            |
|  | <a href="#">Massey University</a>                 |  | <a href="#">University of Tasmania</a>          |
|  | <a href="#">Murdoch University</a>                |  | <a href="#">University of Technology Sydney</a> |
|  | <a href="#">Queensland Uni. of Technology</a>     |  | <a href="#">University of Waikato</a>           |
|  | <a href="#">RMIT University</a>                   |  | <a href="#">University of Western Australia</a> |
|  | <a href="#">Southern Cross University</a>         |  | <a href="#">University of Western Sydney</a>    |
|  | <a href="#">Swinburne Uni. of Technology</a>      |  | <a href="#">University of Wollongong</a>        |
|  | <a href="#">University of Adelaide</a>            |  | <a href="#">Victoria Uni. of Technology</a>     |

<http://adt.caul.edu.au/>

**Figure 1 - ADT program participation**



# ARROW



*Australian Repositories Online to the World* has undertaken two main activities:

- The **ARROW Discovery Service** is a federated gateway to OAI-PMH compliant repositories, run by the National Library  
<http://search.arrow.edu.au/>
- Developing a commercial front-end to Fedora software, known as **VITAL** and licensed by VTLS Inc (USA).



## Contributions:

|   |       |
|---|-------|
| Australian Computer Society                                       | 33    |
| Australian Digital Theses   | 13446 |
| ALIA  | 101   |
| Australian National University                                    | 2649  |
| Australian Policy Online  | 4138  |
| Bond University   | 687   |
| Curtin University of Technology                                   | 1137  |
| Flinders University   | 1246  |
| Griffith University   | 10319 |
| Journal of the Association for the Study of Australian Literature | 92    |
| Monash University   | 1035  |
| Queensland University of Technology                               | 1504  |

## Arrow Discovery Home

A selection of the research most recently added to ARROW Discovery Service is:

- [Quilting Professional Stories: A Gendered Experience Of Choosing Social Work As A Career, Mensinga, Joanna Tempe; j.mensinga@cqu.edu.au, 2005](#)
- [Development of a Risk Assessment Checklist for Juvenile Sexual Offenders: a Meta-Analytic Approach, Rombouts, Sacha; n/a, 2006](#)
- [Patient-specific models of cartilaginous tissues based on laser scanning confocal arthroscopy, Taylor, Zeike Amos, 2006](#)
- [Physical activity, weight change, and self-perception changes among obese individuals, Teakle, Helen, 2006](#)
- [Physiological and metabolic responses of repeated-sprint bouts : specific to field-based team sports, Spencer, Matthew, 2006](#)

The most recently accessed research is:

- [Borderline : Australia's response to refugees and asylum seekers in the wake of the Tampa, Mares, Peter W.; Swinburne University of Technology. Institute for Social Research, 2002](#)
- [The deadly waiting game, Browne, Peter M.; Swinburne University of Technology. Institute for Social Research, 2002](#)
- [Le Journal du Père Antoine Garin 1844-1846. Une édition critique présentée avec commentaire, transcription et annotations., Serabian, H&#233;l&#232;ne; chocolat@clear.net.nz, 2006](#)
- [Safety, courts and crime, Johnstone, Richard; National Research Centre for OHS Regulation; ANU, 2003](#)
- [The prevention of occupational injuries and illness: the role of economic incentives, Clayton, Alan; National Research Centre for OHS Regulation; ANU, 2003](#)

<http://search.arrow.edu.au/>

# APSR



*The Australian Partnership for Sustainable Repositories has:*

Done considerable work on **sustainability of repositories**, and runs workshops in conjunction with ARROW

One partner, the University of Queensland, has developed an open-source front-end to Fedora software, known as **Fez**.

# OAK Law

The *Open Access to Knowledge Law* project has concentrated on copyright and legal matters, running out of the Queensland University of Technology.

Excellent guides to copyright and other legal matters available online from <http://www.oaklaw.qut.edu.au/>

Also working on adding to SHERPA database with Australasian journals.

# RUBRIC

*Regional Universities Building Repository Infrastructure Collaboratively* remit is to assist smaller universities to establish repositories in line with best practice.

RUBRIC is led by the University of Southern Queensland, and has a range of software for evaluation. It operates an EPrints repository itself.

<http://www.rubric.edu.au/>

# MAMS



*Meta Access Management System is building a identity module based on Shibboleth, which will manage identity authentication for Australian researchers, regardless of what institution(s) they work for or collaborate with. Required for Australian collaborative environment.*

<http://www.federation.org.au/>



# Current repositories

Leaving the ADT repositories aside, there are now 19 universities with OA repositories in Australia (exactly 50%).

As will be seen later, this will reach 100% by end of 2007, through the RQF program and its ASHER offshoot.

The current repositories cover all the top nine research-intensive universities, and most of those in the second tier.

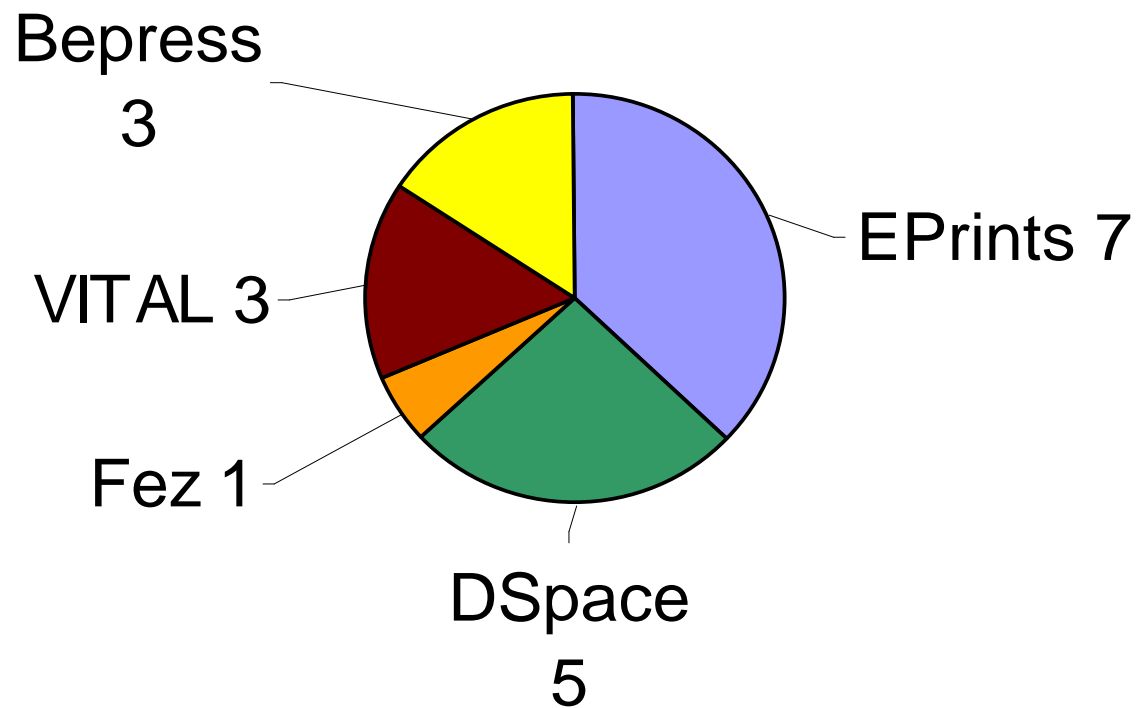
# Software

Only five different software packages are used in Australia, and this is not expected to change in the near future except perhaps by the addition of *Ex Libris*.

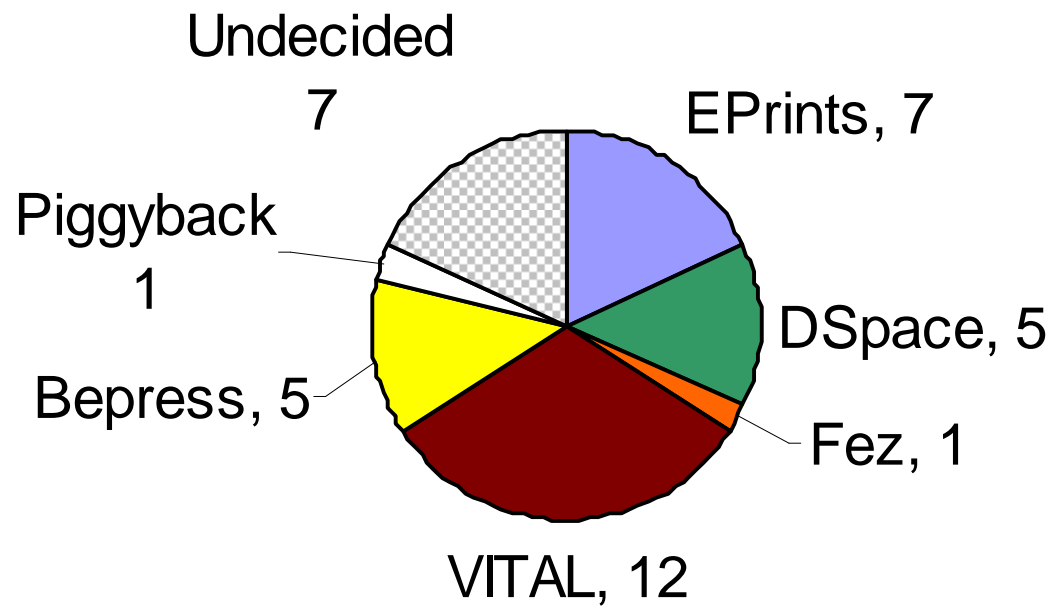
The packages are EPrints, DSpace, Fez, VITAL, and ProQuest's Digital Commons.

Three original EPrints repositories have migrated to DSpace (ANU), Fez (UQ) and VITAL (Monash)

## Mid 2007 repositories



## 2008 repositories



# RQF



The Federal Government have decided to have an RAE-style research assessment, which will determine part of the block grants to universities from 2009. It is known as the *Research Quality Framework* or **RQF**.

Although based on the UK's RAE, it is significantly different – in some facets more advanced, in some behind.

# Key points

Like RAE – four best research outputs of group member for evaluation

Also total output of group to be listed

Citation data will be supplied to panels

13 discipline panels

Evaluated on *Quality* and *Impact* separately. *Quality* relates to research outputs; *Impact* to social consequences.

# Effect on repositories

All evidence portfolios will be submitted electronically.

All research objects (evidence) will be accessed electronically in repositories situated in Australian universities

First consequence: by early 2008 **all** Australian universities will have a repository or belong to a repository consortium

# ASHER program



\$A 25.5M will be made available to universities to achieve this target, or upgrade their repositories, plus \$A 16.4M for RQF compliance.

Guidelines are due any day and applications will be made shortly.

Expenditure backdated to December 2006 is acceptable. ASHER Program will run for 3 years.



# The RQF IMS - 1

All evidence portfolios will be held in the RQF IMS for access by panel reviewers.

Panel reviewers will log in to the IMS and can request a research output assigned to them.

The IMS will anonymize the request and retrieve the item from a distributed repository, even if restricted (not open access).

# The RQF IMS - 2

DEST is indemnifying all universities for copyright and negotiating with publishers.

Research objects must reside in an Australian repository. No out of repository links are allowed, even for already OA items.

Traditional research objects must be “publisher’s pdfs”. In the fine and performing arts there will be variations.

# Australian Data Collection

All Australian universities report their research outputs and research training annually to DEST in the Higher Education Research Data Collection (HERDC), since at least 1992.

Research outputs comprise journal papers, conference papers, book chapters and books.

<http://www.avcc.edu.au/documents/publications/stats/HERDCTimeSeriesData1992-2005.xls>

HERDC is spot-audited for accuracy.

# Use of the data

As a consequence, we know the refereed research output and PhD graduations from each university, as an open document.

It becomes possible to estimate just how much of its research output, or theses, is being collected in repositories.

Let's look at some examples.



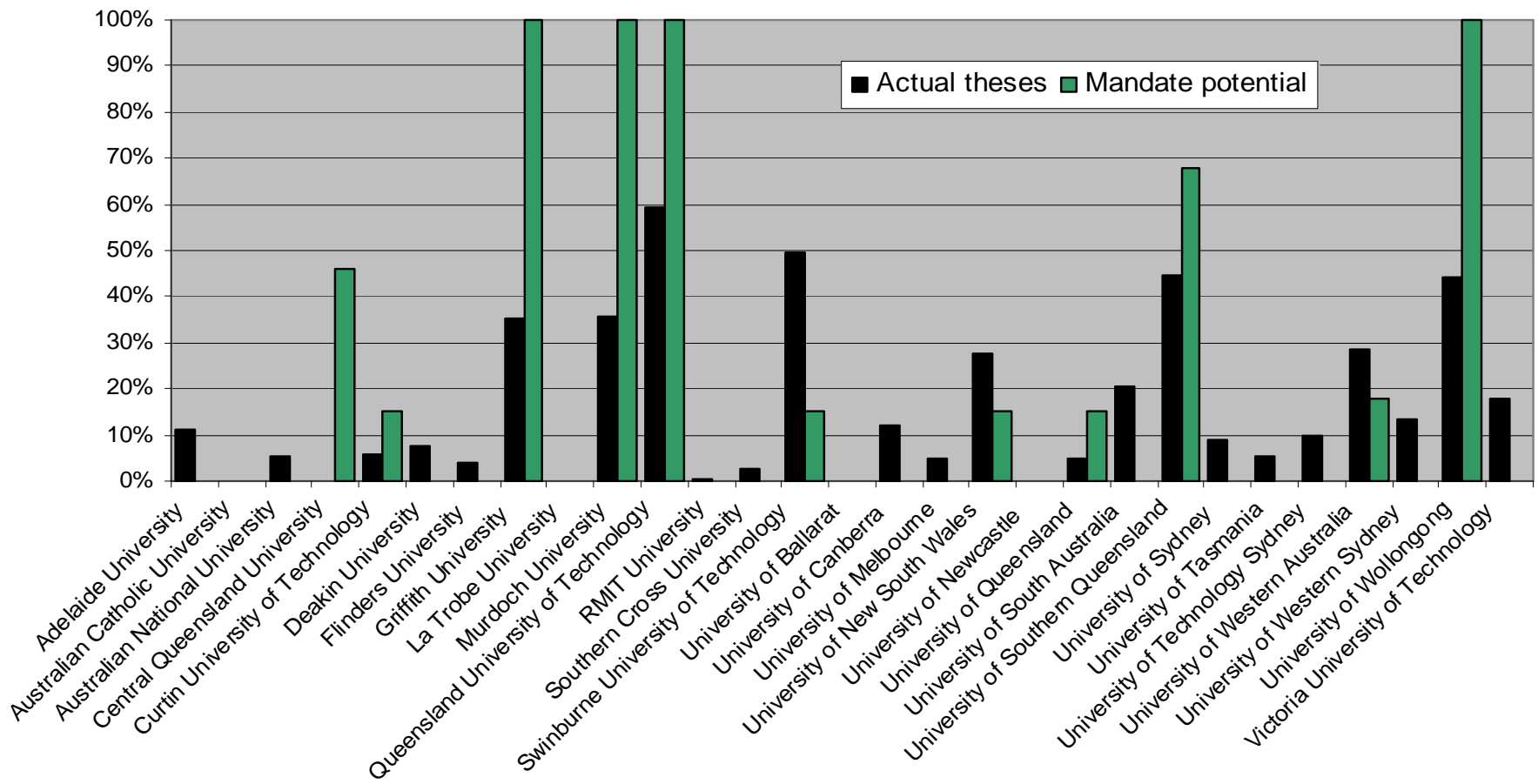
# ADT



Universities find it easier to create rules for students than for staff.

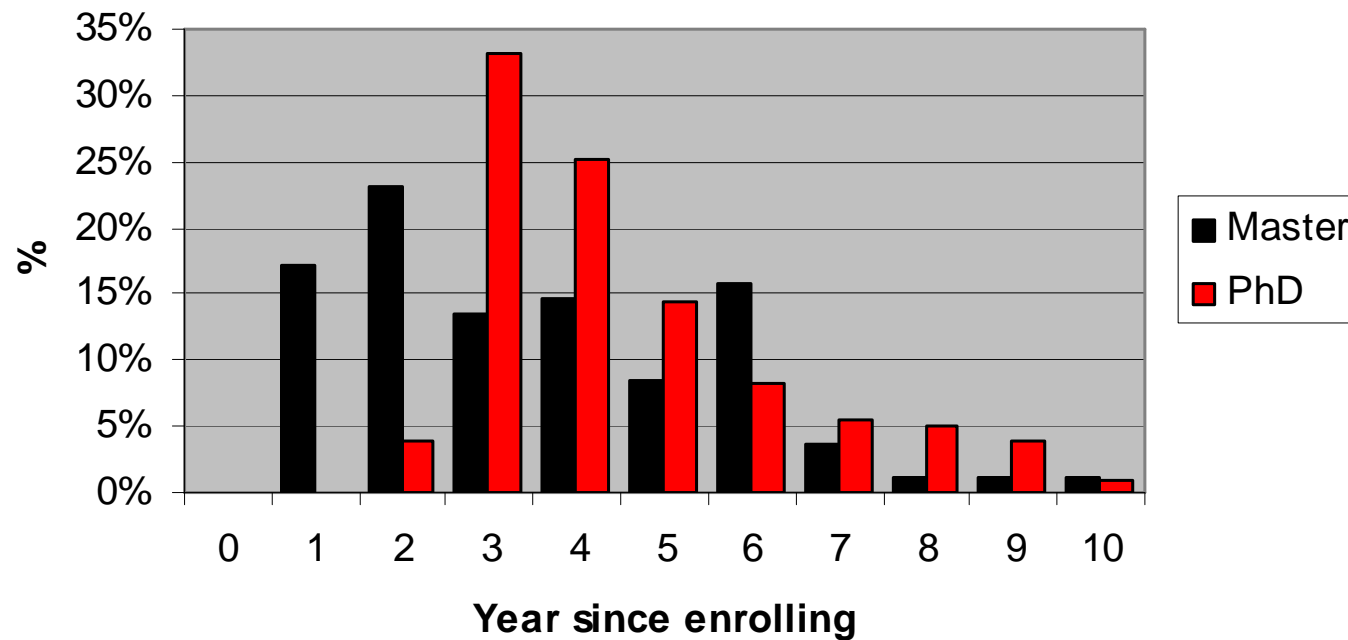
Of the 34 universities contributing to ADT, 16 have **mandatory deposit policies** in place (47%).

The outcomes are clear: mandate and the repository fills with theses; **don't and it stays derisorily empty (<20%)**.



# Completion times

Figure 5 - Completion Time



# Research deposit policies

*Queensland University of Technology (QUT)* has a mandatory deposit policy, which has been in place since 2004.

All other Australian universities presently rely on persuasion.

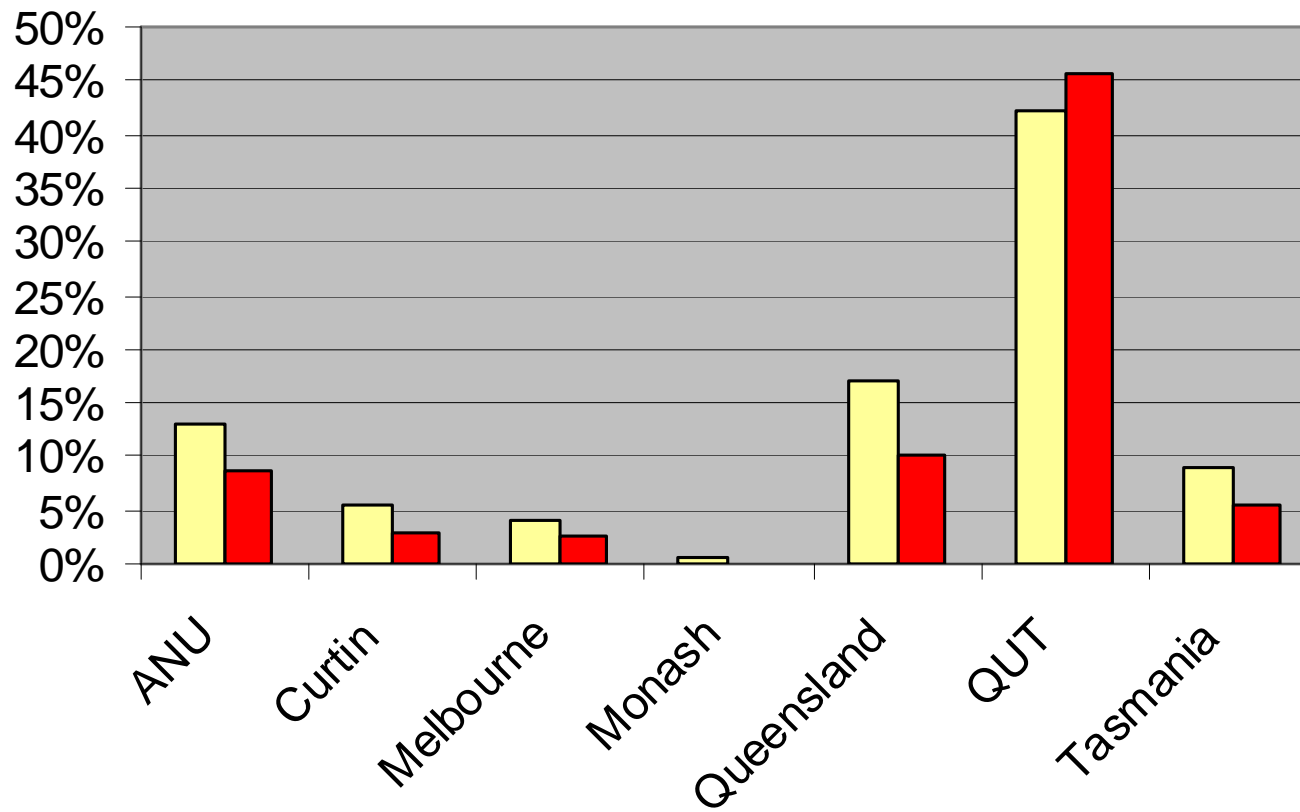
As a result all the repositories are relatively empty, except for QUT.

The RQF may change this, as may funder policies...



## % of DEST output

2004 2005



# QUT - % output by category

QUT 2007 - % of HERDC by category

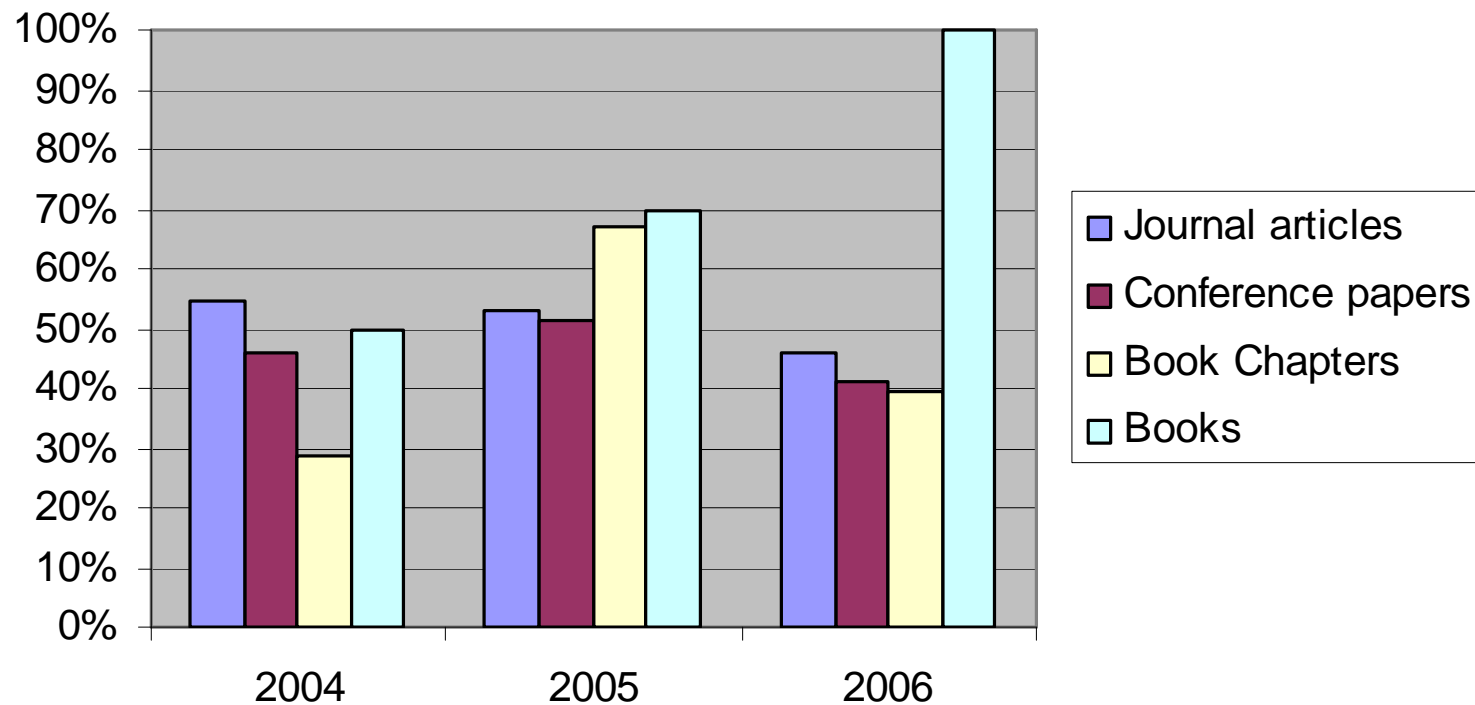


Figure 2 - QUT deposit rates

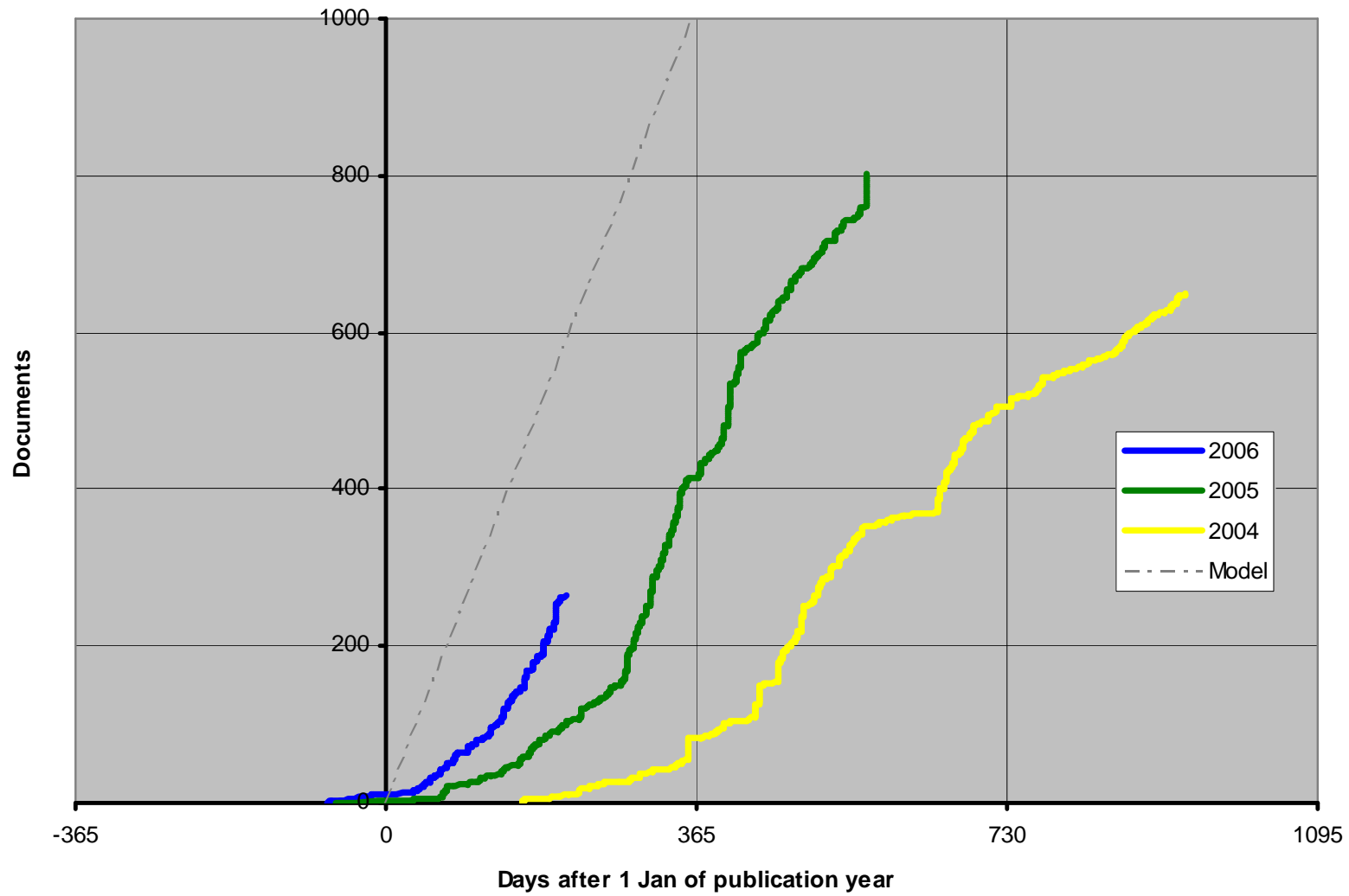
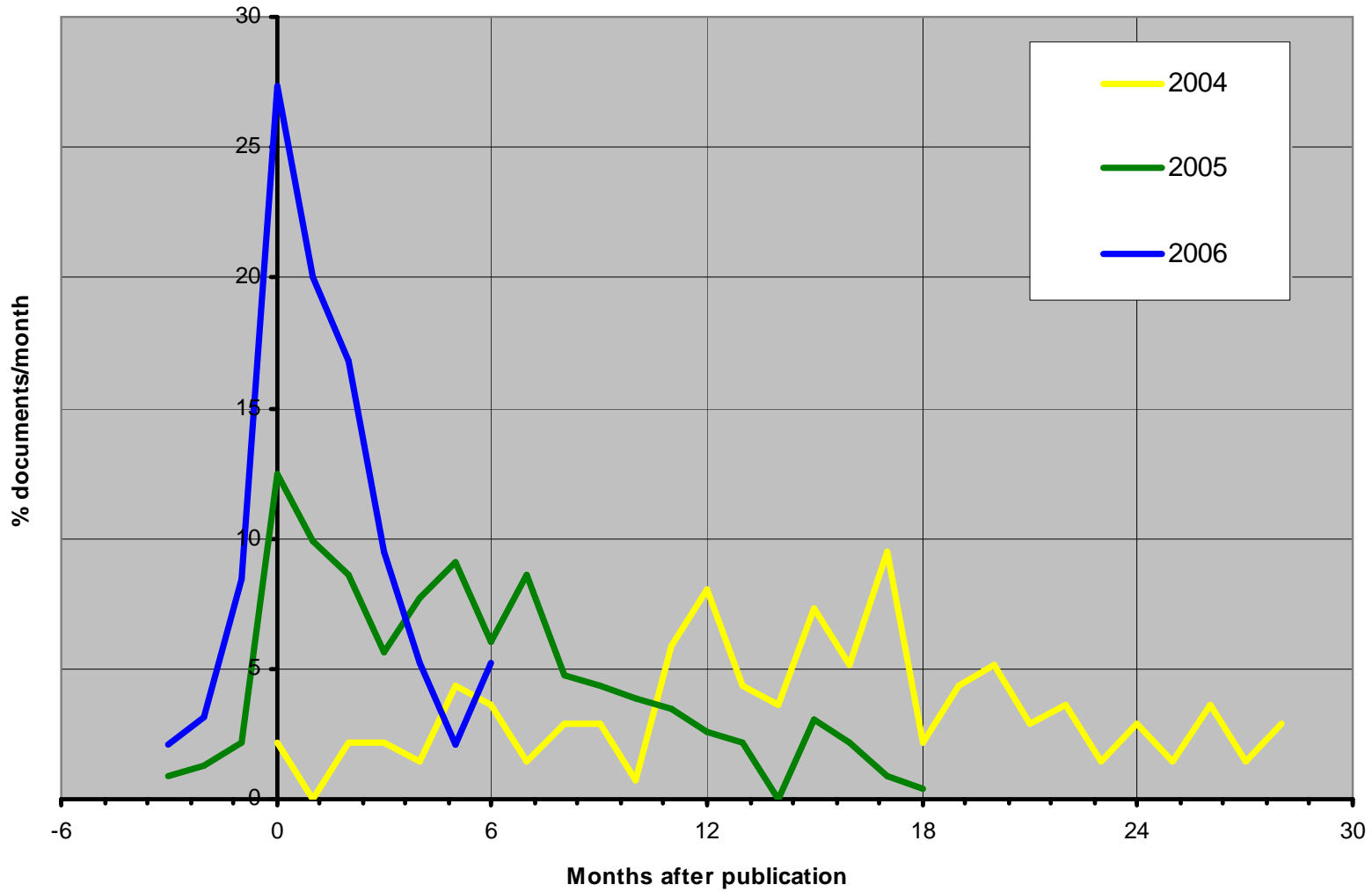


Figure 5 - QUT deposit delays



# Funder policies

The ARC and NH&MRC (research councils) have been inching towards a policy of *requiring* deposit. What they have stated so far is that for all new grants, researchers should provide open access to publications, but if not the researchers must explain why not in their reports.

The Productivity Commission has produced two strong reports which recommend a 100% mandatory deposit policy.



# Contacts & useful links

This presentation with live links available at  
<http://eprints.utas.edu.au/1031>

Author: [Arthur.Sale@utas.edu.au](mailto:Arthur.Sale@utas.edu.au)

The AuseAccess wiki:

<http://leven.comp.utas.edu.au/AuseAccess/>

AuseSearch (federated search on all existing  
Australian & NZ repositories)

<http://www.utas.edu.au/copyright/eprints/search.html>

# Current information

See the AuseAccess wiki:

<http://leven.comp.utas.edu.au/AuseAccess/pmwiki.php?n=Activity.AustralianRepositories>

Selected publications re repositories:

[http://eprints.utas.edu.au/perl/search/advanced?\\_action\\_search=Search&creators=Sale&abstract=repository&ispublished=pub&refereed=EITHE R&\\_order=byyear](http://eprints.utas.edu.au/perl/search/advanced?_action_search=Search&creators=Sale&abstract=repository&ispublished=pub&refereed=EITHE R&_order=byyear)

# Secondary issues not discussed

- **ANU EPress as e-publishing example**  
<http://www.apsr.edu.au/adaptable/kanellopoulos.pdf>
- **EJournals (UTS and Swinburne)**  
<http://www.apsr.edu.au/adaptable/lawton.ppt>
- **EResearch** <http://www.eresearch.edu.au/>



# The End



© Copyright 2007 Arthur Sale

*All rights reserved*

*Arthur Sale asserts the right to be  
recognized as author of this work*

*Contact: [Arthur.Sale@utas.edu.au](mailto:Arthur.Sale@utas.edu.au)*