

Appendix 1: Examples of Other Test Buildings

The Empirical Validation of House Energy Rating (HER) Software for Lightweight Housing in Cool Temperate Climates

Mark Dewsbury
B Arch, B Env. Design, Grad. Cert. Management

Submitted in total fulfilment of the requirements of the degree of Doctor of Philosophy

September 2011

School of Architecture & Design
Faculty of Science, Engineering & Technology
The University of Tasmania

TABLE of CONTENTS

TABLE of CONTENTS	1
LIST of FIGURES	1
Energy Measuring Company (EMC) UK	2
ETNA Test Building, France	4
NBS Test Buildings, USA	5
Swiss Trombe Wall Test Building, Switzerland.....	6
Canadian Direct Gain Test building, Canada	7
PASSYS/PASLINK Test Buildings (various Locations)	8
University of Technology Sydney (UTS) Test Buildings, Australia.....	10
University of Newcastle Test Buildings, Australia.....	11
Bibliography	13

LIST of FIGURES

Figure A1.1 – Image of two EMC ETSU Test Cells	2
Figure A1.2 – EMC ETSU Test Cell Plan	2
Figure A1.3 – EMC ETSU Test Cell Transverse Section	2
Figure A1.4 – EMC ETSU Test Cell Longitudinal Section	2
Figure A1.5 – EMC Gas Test Facility Site Plan and Elevations	3
Figure A1.6– EMC Gas Test Building Plan for 1988.....	3
Figure A1.7 – EMC ETSU Site Photograph.....	3
Figure A1.8 – ETNA Test Building Photograph	4
Figure A1.9 – ETNA Test Building Plan.....	4
Figure A1.10 – ETNA Test Building Section.....	4
Figure A1.11 – NBS Passive Solar Test Building Photograph.....	5
Figure A1.12 – NBS Passive Solar Test Building Plan	5
Figure A1.13 – NBS Passive Solar Test Building Section	5
Figure A1.14 – NBS Loss Alamos Test Building Plan	6
Figure A1.15 – NBS Maryland Test Building Photograph.....	6
Figure A1.16 – Swiss Trombe Wall Test Building Perspective	6
Figure A1.17 – Canadian direct gain test building plan	7
Figure A1.18 – PASSYS/PASLINK Test Building Photograph	8
Figure A1.19 – PASSYS/PASLINK Test Building Perspective	8
Figure A1.20 – PASSYS/PASLINK test building plan	9
Figure A1.21 – PASSYS/PASLINK test building section	9
Figure A1.22 – UTS Test Buildings Photograph.....	10
Figure A1.23 – UTS Test Buildings: External Wall Detail	10
Figure A1.24 – University of Newcastle Test Buildings (Photograph 2006, Heber Sugo).....	11
Figure A1.25 – University of Newcastle Test Building Plan, Elevation, Section and Details	11
Figure A1.26 – University of Newcastle Test Building: Detail of Clay Brick Veneer Wall ..	12
Figure A1.27 – University of Newcastle Test Building: Detail of Double Clay Brick Wall ..	12

Energy Measuring Company (EMC) UK

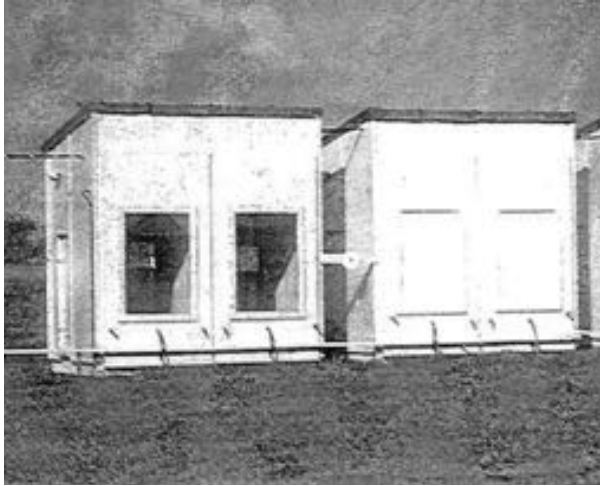


Figure A1.1 – Image of two EMC ETSU Test Cells

(LomasEppel et al. 1994, p. Fig. 1)

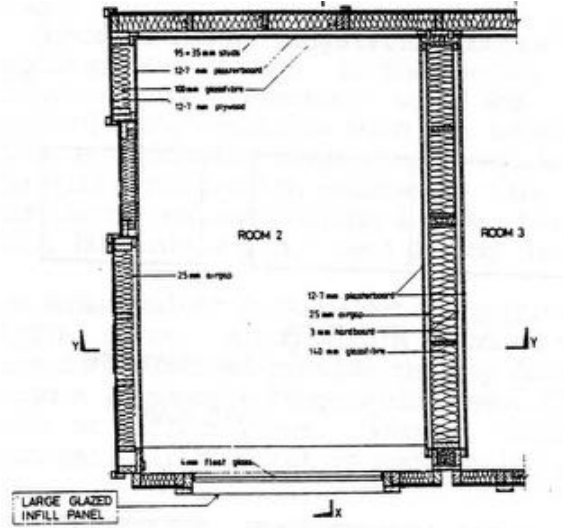


Figure A1.2 – EMC ETSU Test Cell Plan

(LomasEppel et al. 1994, p. 10)

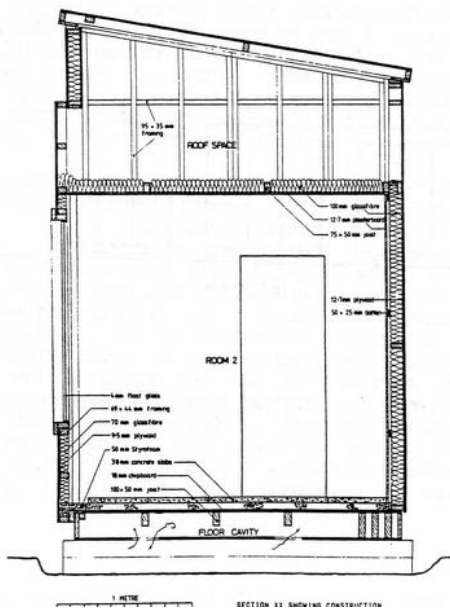


Figure A1.3 – EMC ETSU Test Cell Transverse Section

(LomasMartin et al. 1994, p. 6)

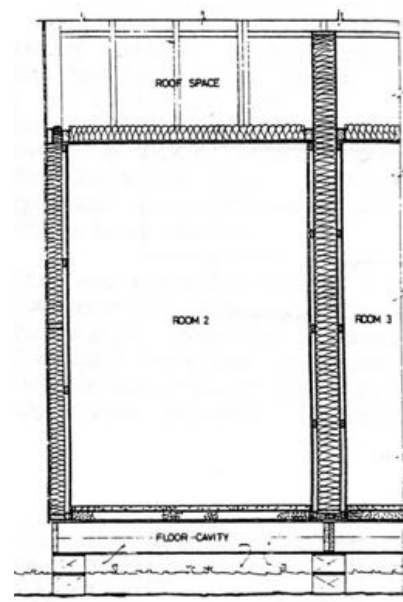


Figure A1.4 – EMC ETSU Test Cell Longitudinal Section

(LomasMartin et al. 1994, p. 7)

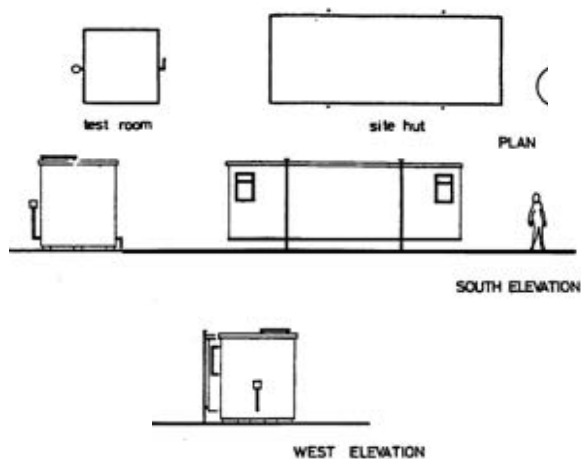


Figure A1.5 – EMC Gas Test Facility Site Plan and Elevations

(Lomas 1991b, pp. Fig, 10)

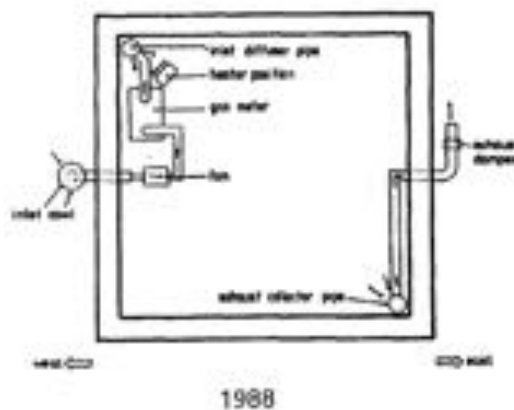


Figure A1.6– EMC Gas Test Building Plan for 1988

(Lomas 1991b, p. Fig. 4)



Figure A1.7 – EMC ETSU Site Photograph

(Lomas 1991b, p. Plate 3)

ETNA Test Building, France

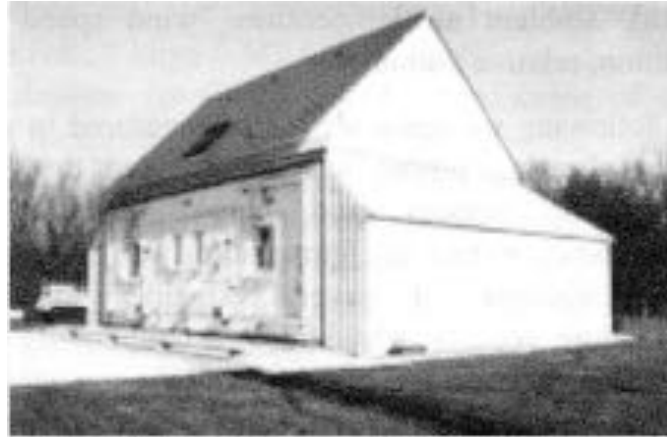


Figure A1.8 – ETNA Test Building Photograph

(Palomo del Barrio & Guyon 2002, p. Figure 3.1)

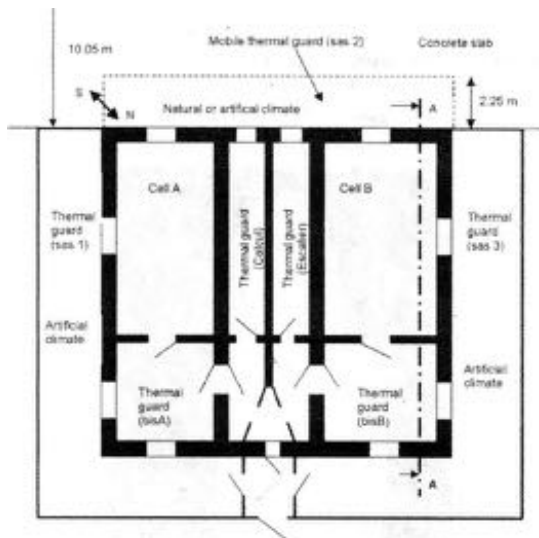


Figure A1.9 – ETNA Test Building Plan

(Neymark et al. 2005, p. 841)

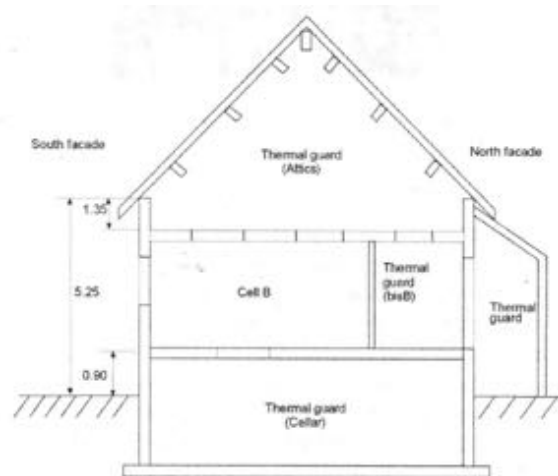


Figure A1.10 – ETNA Test Building Section

(Girault 1994, p. 10)

NBS Test Buildings, USA



Figure A1.11 – NBS Passive Solar Test Building Photograph

(Lomas 1991b, p. i)

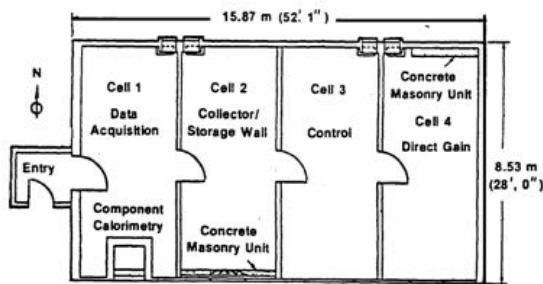


Figure A1.12 – NBS Passive Solar Test Building Plan

(Lomas 1991b, p. Fig. 14)

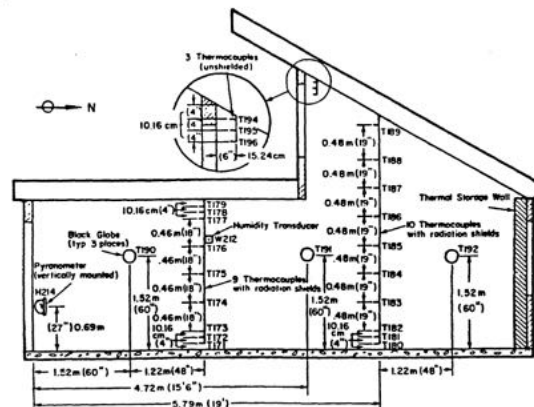


Figure A1.13 – NBS Passive Solar Test Building Section

(Lomas 1991b, p. Fig. 15)

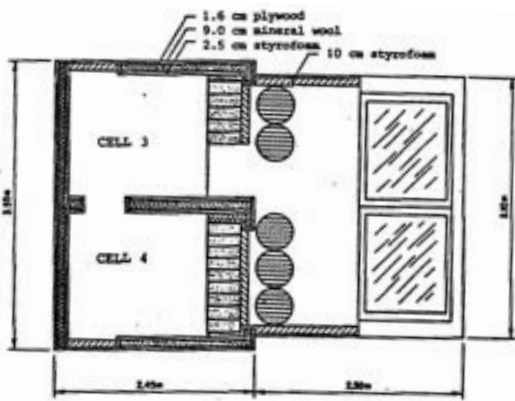


Figure A1.14 – NBS Loss Alamos Test Building Plan

(Lomas 1991a, p. 6)

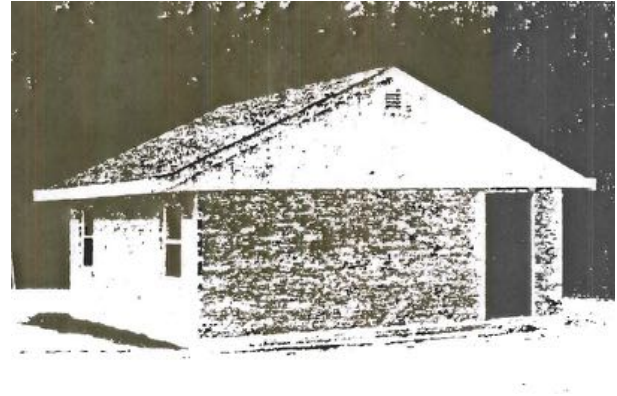


Figure A1.15 – NBS Maryland Test Building Photograph

(Burch et al. 1982)

Swiss Trombe Wall Test Building, Switzerland

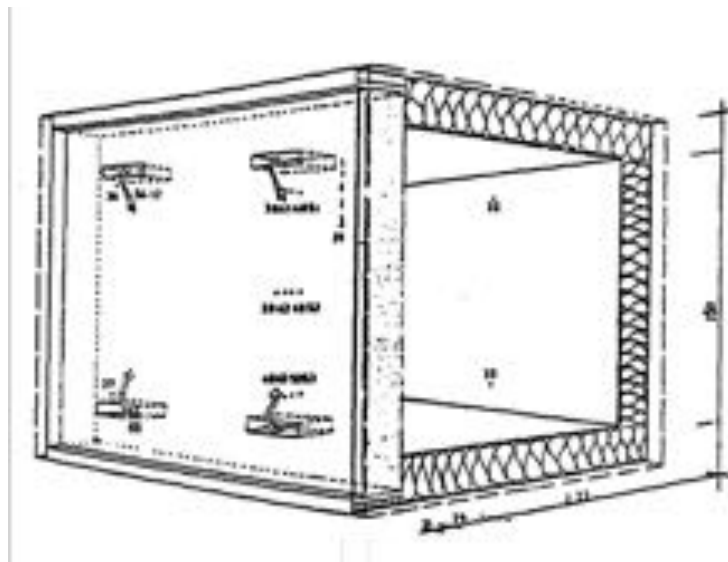


Figure A1.16 – Swiss Trombe Wall Test Building Perspective

(Lomas 1991a, p. 9)

Canadian Direct Gain Test building, Canada

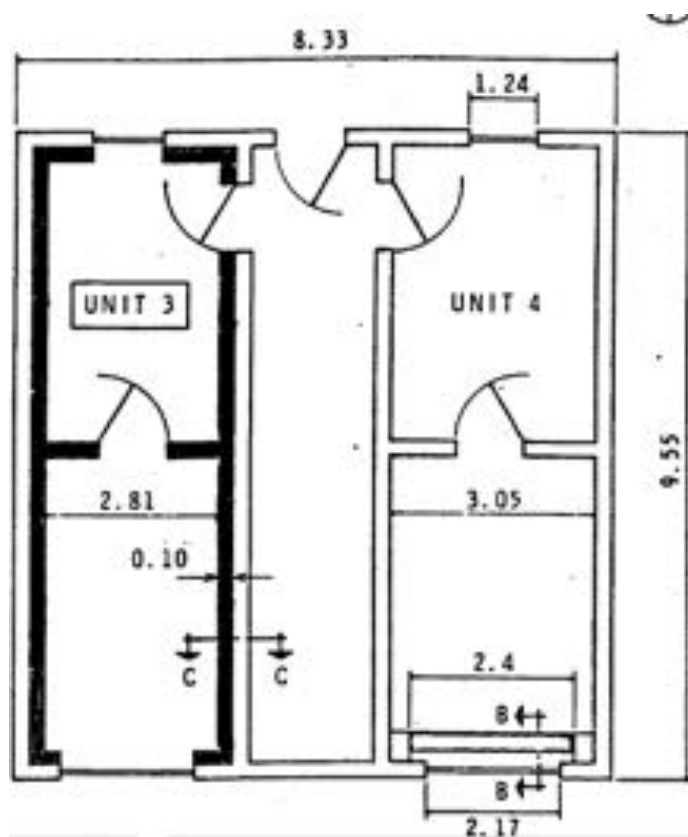


Figure A1.17 – Canadian direct gain test building plan

(Judkoff 1985, p. 264)

PASSYS/PASLINK Test Buildings (various Locations)



Figure A1.18 – PASSYS/PASLINK Test Building Photograph

(Jimenez & Madsen 2008, p. 157)

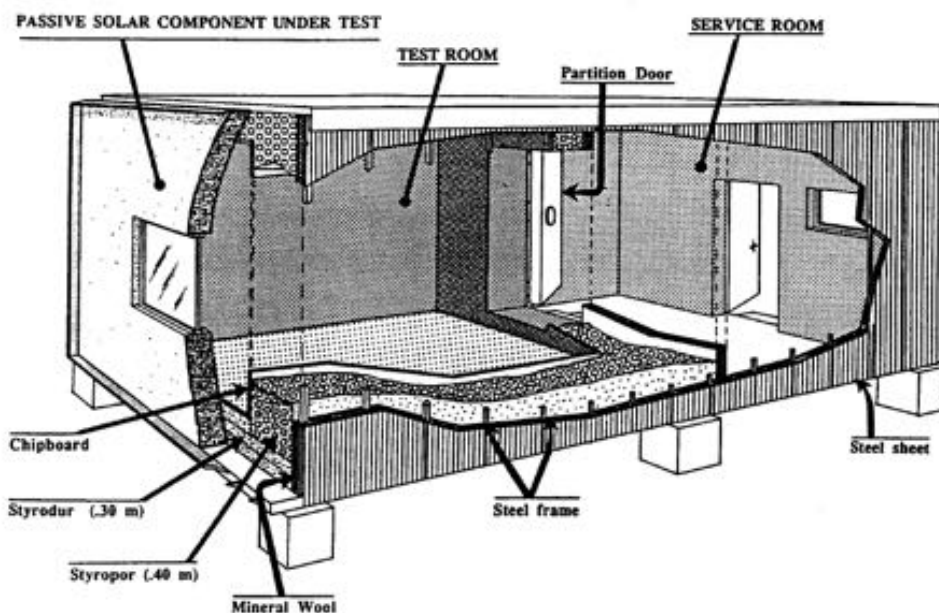


Figure A1.19 – PASSYS/PASLINK Test Building Perspective

(CSTB 1990, p. 0.3)

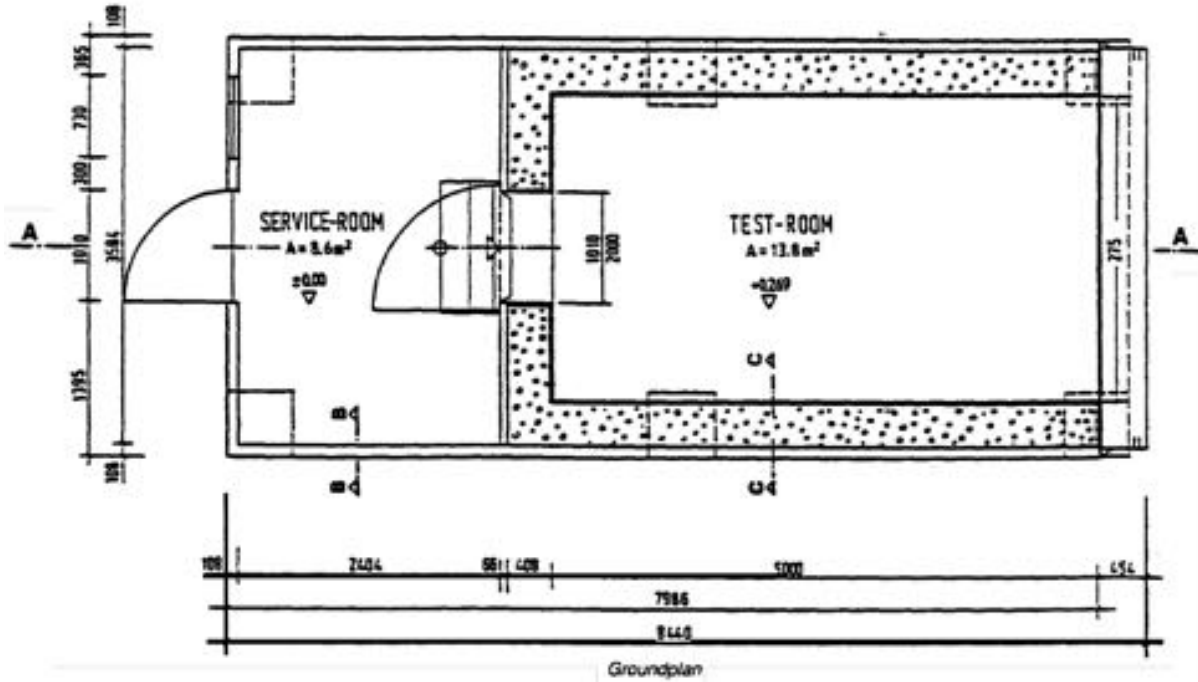


Figure A1.20 – PASSYS/PASLINK test building plan

(Lomas 1991b, p. Fig. 9)

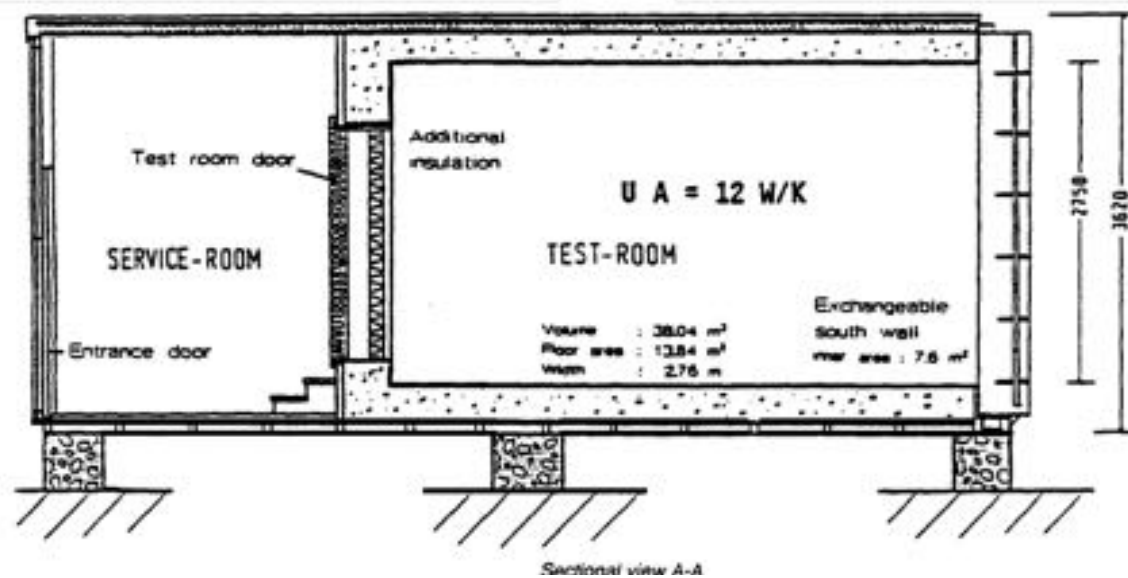


Figure A1.21 – PASSYS/PASLINK test building section

(Lomas 1991b, p. Fig. 9)

University of Technology Sydney (UTS) Test Buildings, Australia



Figure A1.22 – UTS Test Buildings Photograph

(Heathcote & Moor 2007)

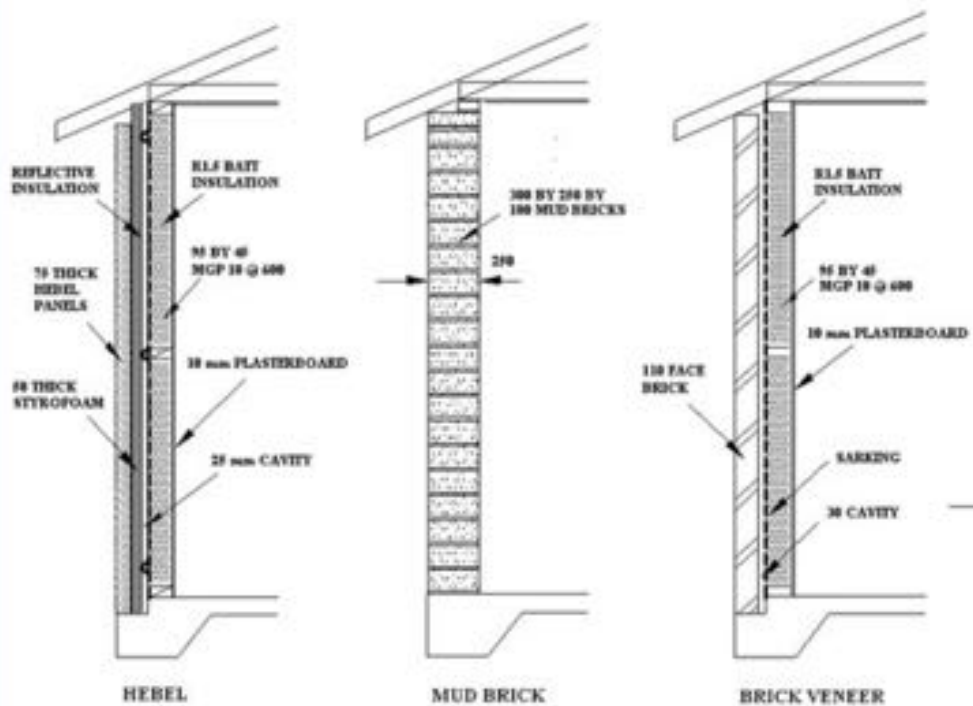


Figure A1.23 – UTS Test Buildings: External Wall Detail

(Heathcote & Moor 2007)

University of Newcastle Test Buildings, Australia



Figure A1.24 – University of Newcastle Test Buildings (Photograph 2006, Heber Sugo)



Figure A1.25 – University of Newcastle Test Building Plan, Elevation, Section and Details

(Clark, Sugo & Page 2003)

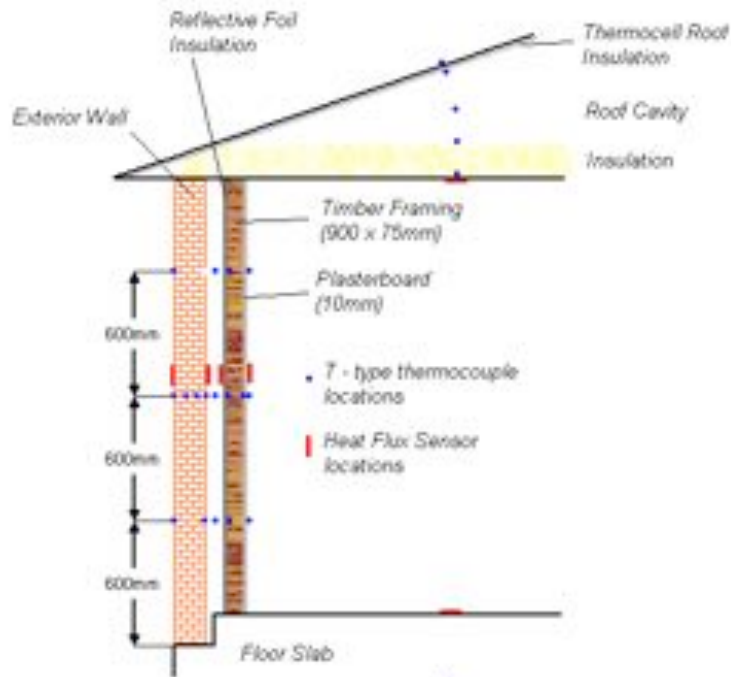


Figure A1.26 – University of Newcastle Test Building: Detail of Clay Brick Veneer Wall

(Sugo 2006)

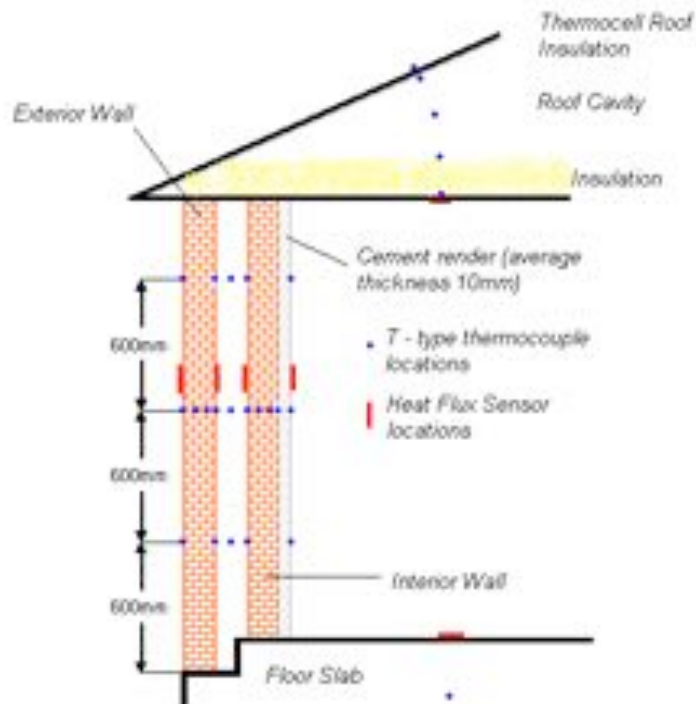


Figure A1.27 – University of Newcastle Test Building: Detail of Double Clay Brick Wall

(Sugo 2006)

Bibliography

- Burch, D, Remmert, W, Krintz, D & Barnes, C 1982, '*A field study of the effect of wall mass on heating and cooling loads of residential buildings*', paper presented to *Building Thermal Mass Seminar, Knoxville, TN, 2-3 june 1982*.
- Clark, M, Sugo, H & Page, A 2003, '*Thermal performance of Australian masonry housing - a preliminary study*', paper presented to The Ninth North American Masonry Conference, Clemson, South Carolina, 1-4 June 2003.
- CSTB 1990, *The PASSYS project phase 1: subgroup simplified design tools final report 1986-1989*, EUR 12998 EN - 081-89-PASSYS-SDT-FP-020, Commission of the European Communities Directorate-General XII for Science, Research and Development.
- Girault, P 1994, *Description of ETNA cells: physical and geometrical configuration (measuring cells)*, HE-14/94/054, Department Applications de l'Electricite dans les Batiments, Direction des Etudes et Recherches, Service Applications de l'Electricite et Environnement, Electricite de France, France.
- Heathcote, K & Moor, G 2007, '*Comparative analysis of the thermal performance of three test buildings*', paper presented to Adobe USA 2007, New Mexico, 2007.
- Jimenez, M & Madsen, H 2008, '*Models for describing the thermal characteristics of building components*', *Building and Environment*, vol. 43, pp. 152-162.
- Judkoff, R 1985, '*International Energy Agency building simulation comparison and validation study*', paper presented to Building Simulation 1985.
- Lomas, K 1991a, *IEA Task VIII empirical validation: a critical appraisal*, International Energy Agency.
- 1991b, *Summary and appraisal of high quality data sets in the U.K.*, International Energy Agency.
- Lomas, K, Eppel, H, Martin, C & Bloomfield, D 1994, *Empirical validation of thermal building simulation programs using test room data: volume 1 - final report*, IEA Energy Conservation in Buildings and Community System Program Appendix 21 and IEA Solar Heating and Cooling Programme Task 12.
- Lomas, K, Martin, C, Eppel, H, Watson, M & Bloomfield, D 1994, *Empirical validation of thermal building programs using test room data: volume 2 - empirical validation package*, IEA Energy Conservation in Buildings and Community System Program Appendix 21 and IEA Solar Heating and Cooling Programme Task 12.
- Neymark, J, Girault, P, Guyon, G, Judkoff, R, LeBerre, R, Ojalvo, J & Reimer, P 2005, '*The "ETNA BESTEST" empirical validation data set*', paper presented to Building Simulation 2005, Ninth International IBPSA Conference, Montreal, Canada, August 15-18, 2005.
- Palomo del Barrio, E & Guyon, G 2002, *Using parameters space analysis techniques for diagnostic purposes in the framework of empirical model validation: a report of Task 22, Subtask A, building energy analysis tools*.
- Sugo, H 2006, '*Construction and instrumentation details of dedicated thermal test modules located at the University of Newcastle*', University of Newcastle.