

An Unconformity in South-West Tasmania

By

JON STEPHENSON

University of Queensland

(COMMUNICATED BY PROFESSOR S. WARREN CAREY)

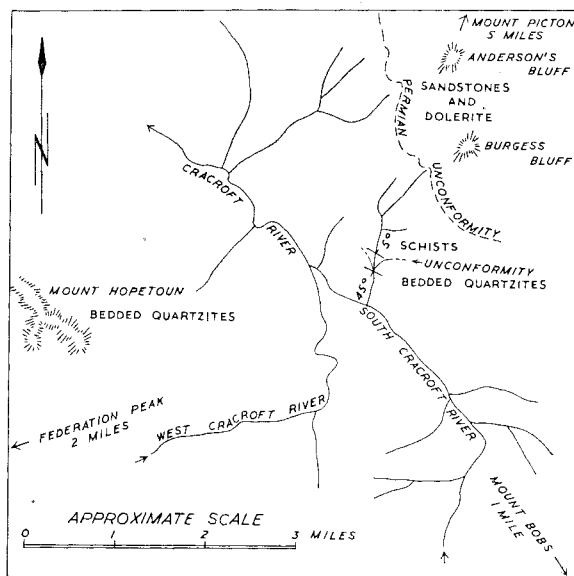
This note is intended to record an unconformity in the Federation Peak district of south-west Tasmania, which has not been previously reported.

The unconformity is well exposed in a small creek in burnt-out country at a point approximately 1000 yards east of the junction of the West and South Cracroft Rivers. The locality is included on aerial photographs Nos. 1673, 1674 of Run. 15, PICTON.

The older formation has a prominent schistosity dipping to the N.N.E. at from 45° to 60° . Localised puckering of this schistosity is common and at some places another planar structure is evident. Rock types in this older formation include quartz schists, mica schists and sheared conglomerates.

The younger formation dips to the S.S.W. at 35° . It is composed of well-bedded white quartzites with occasional very thin conglomerates. Elsewhere, as on Mt. Hopetoun, this formation of well-bedded quartzites displays common current-bedding and ripple mark.

The unconformity is illustrated in the photograph (Plate I, Fig. 1), and its position is shown on the accompanying sketch map (text. fig. 1).



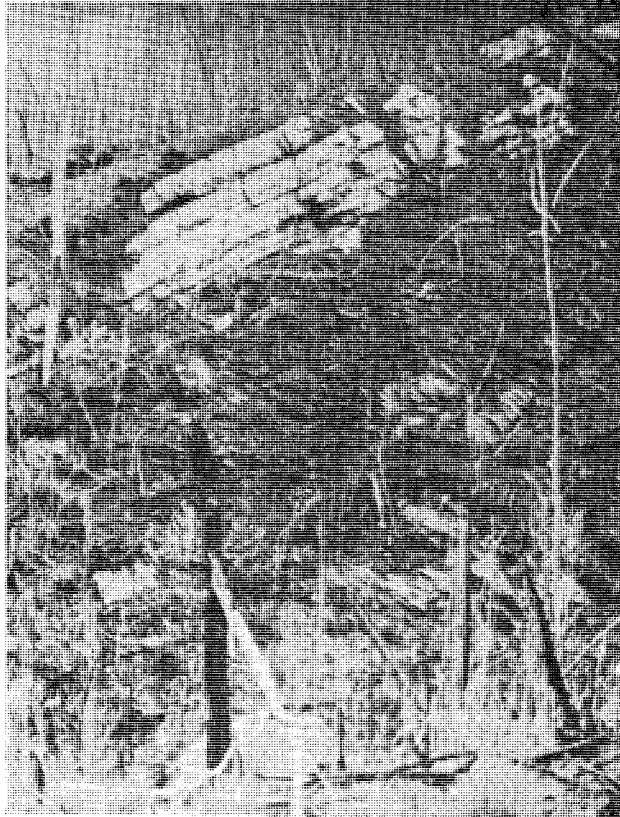


FIG. 1.—Photograph of unconformity between quartzites and conglomerates above and quartz and mica schists below, near the junction of the branches of the Cracroft River, S.W. Tasmania.

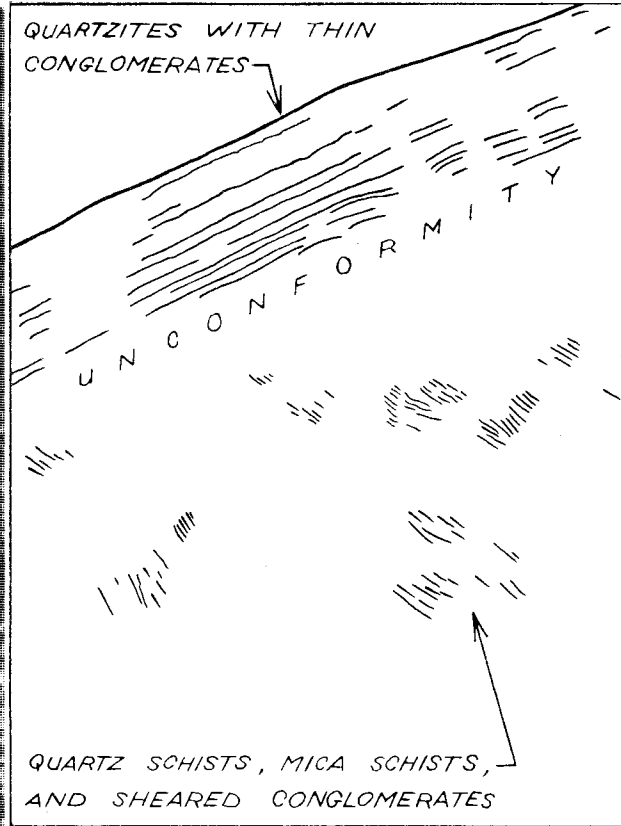


FIG. 2.—Tracing showing structures on Fig. 1.