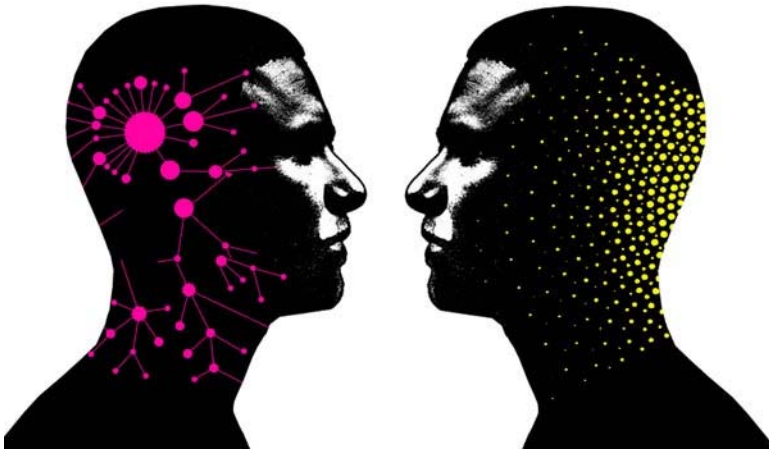


# ART FORUM

April 11 2008

## Marcelo Stamm

THE SEAT OF THE SOUL -  
On the Inner and the Outer,  
Embodiment and Conditions of Creativity



Where is the (human?) soul? As a heuristic tool this question insinuates place, location and situatedness. The *philosophical* question in response to the initial heuristic device is whether "Where is the soul?" is a good question (at all).

The aim of *philosophical topology* is to give an account of situatedness and embodiment, and provide an understanding of the human being as a be-souled creature, juxtaposed to machines. Are there ways to understand a specific dialectic of "the inner" and "the outer" in relation to the liminal nature of the alleged demarcation line between "inside" and "outside" as both constitutive of be-souledness and as crucial to an understanding of human creativity?

The talk is a first and tentative philosophical attempt to relate philosophical topology of the soul to research on the very conditions of human creativity.

MARCELO STAMM has been the Head of the UTas School of Philosophy since mid 2005 following his appointment to the UTas department in late 2003. His research has had a double focus on problems of metaphysics (i.e problems of boundaries, limits and liminality, (cognitive) horizons, demarcation lines, inner/outer and inside/outside) on one hand and the theory of mind and subjectivity, creativity and self-consciousness on the other. He has pursued these within the philosophical tradition of German Idealism and Wittgenstein. For more than fifteen years, Marcelo Stamm has been the closest collaborator to Professor Dieter Henrich at Munich University. Working side by side with the leading philosophical figure in contemporary Germany, has built up a unique expertise on German Idealism in the creativity of so-called *constellations*. It is fair to say that Marcelo Stamm is – next to Henrich – the most experienced researcher (world-wide) with regard to *constellation research* as an investigation into conceptual creativity. The Munich Idealism project – due to its constellational methodology - was continuously rated as the most innovative German research project in the whole of the Humanities.

Whilst holding a research fellowship at St. John's College Oxford in the 1990s, Marcelo Stamm pursued the problem of horizon, demarcation line, bounds and limits in generic terms, developing a *philosophical topology*. He thereby focused on Wittgenstein's latest manuscripts on the "Inner and the Outer" which resulted in a monograph under the title "Topology of the Soul", for which he was also granted a research fellowship at the *Wittgenstein Archives at the University of Bergen* in Norway. Marcelo Stamm has been successful with two proposals simultaneously for two large ARC Discovery grants from 2007 - 2009 in which he is the leading investigator in collaboration with partner investigators in Oxford, Germany and New Zealand. As an outgrowth of his research undertaken in Munich and Oxford, these ARC projects take up specific methodological and conceptual elements that underlay his earlier projects and reflect them in the light of creativity research in particular.

12.30 pm Dechaineux Lecture Theatre

Tasmanian School of Art-Hobart, University of Tasmania