




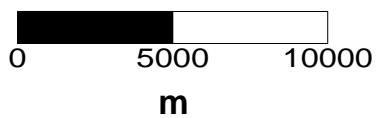
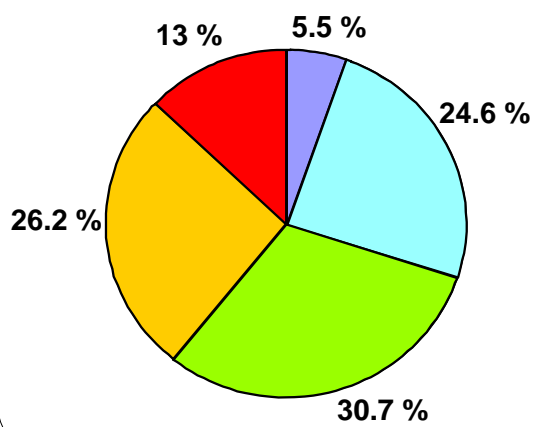


**Map 2.**  
**King Island predicted average soil salinity between**  
**0 - 350 cm depth on 15,420 hectares**  
**June 2005**

**LEGEND**

-  Non Saline (<2 dS/m)
-  Slightly Saline (2-4 dS/m)
-  Moderately Saline (4-8 dS/m)
-  Very Saline (8-16 dS/m)
-  Extremely Saline (>16 dS/m)



**Scale 1:238,000**

