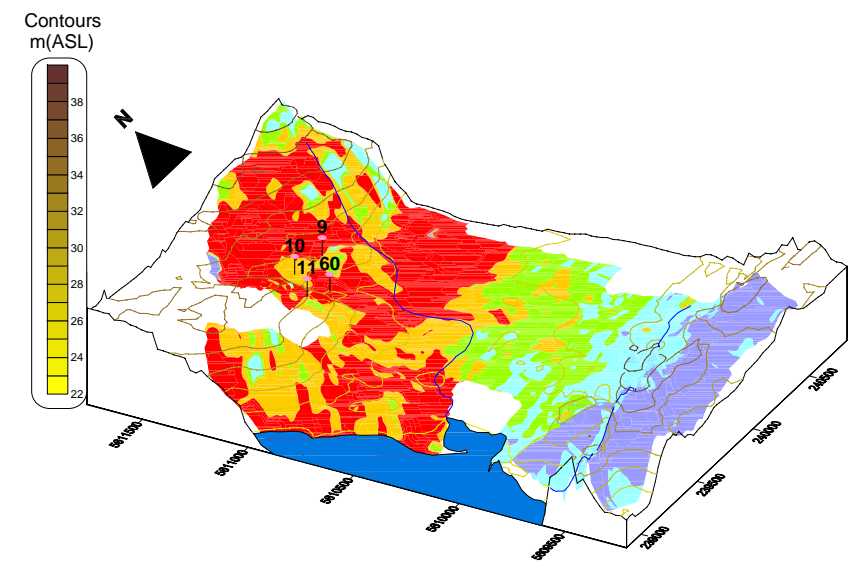
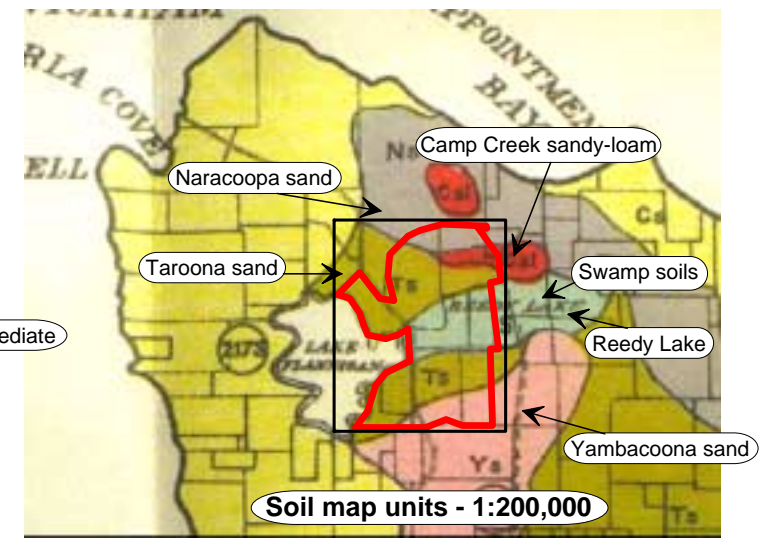
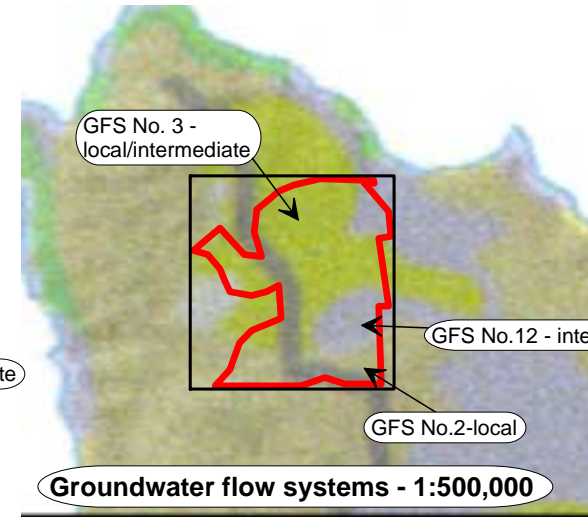
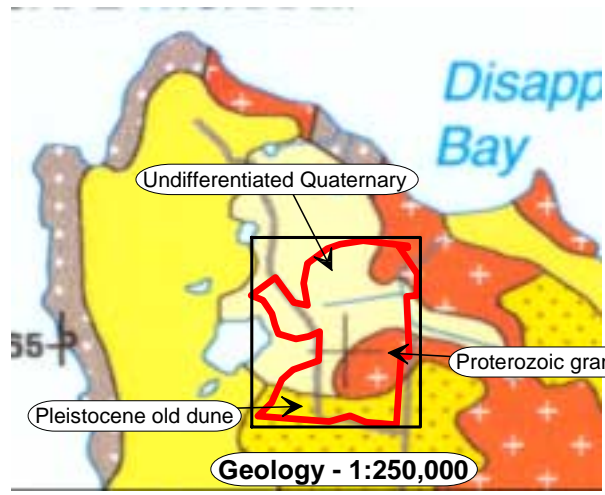
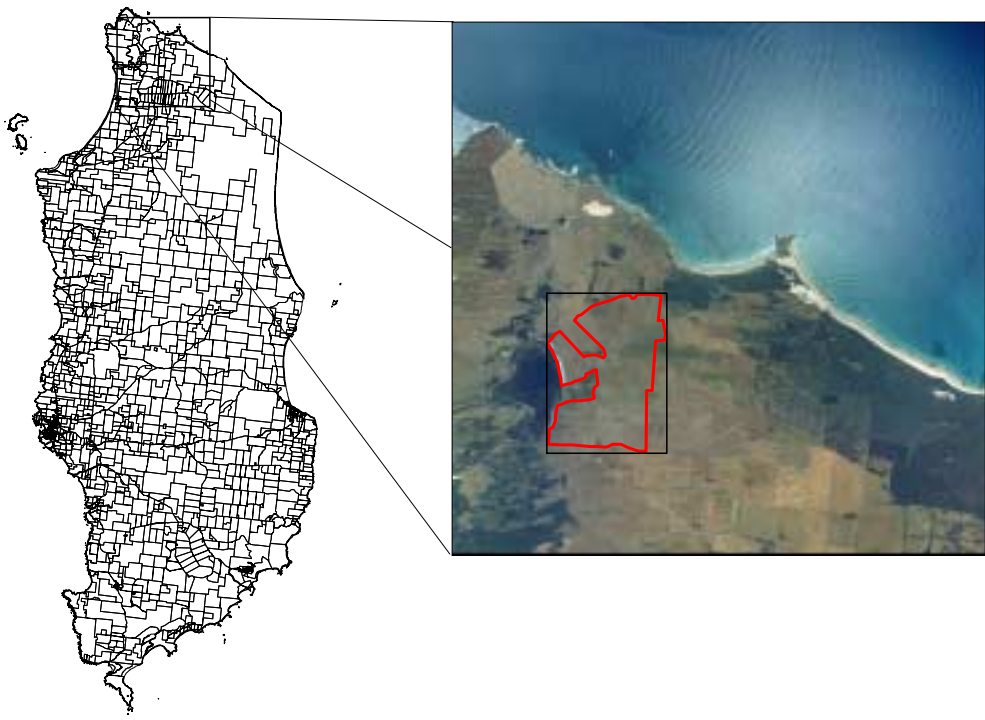


Map 3.
Lake Flannigan
 Predicted average soil salinity at 0 - 350 cm depth
 June 2005



- LEGEND**
- Non Saline (<2 dS/m)
 - Slightly Saline (2-4 dS/m)
 - Moderately Saline (4-8 dS/m)
 - Very Saline (8-16 dS/m)
 - Extremely Saline (>16 dS/m)
 - EMI Sample point
 - Bore Hole Location
 - Ground Water

